

Dor End of Season 2005 Area D1 East Supervisor's Report

Preliminary Information / Credits

Area supervisor: Sarah Culpepper Stroup (SCS) and S. Rebecca Martin (SRM)

Unit Supervisor: AS-15: Mont Allen (MA), AR-16: Lauren Cannon (LCC), AQ-13/14/15 and AR-14/15 Rebecca Karberg (RAK)

Field Drawing: Sveta Matskevich

Photographer: Howard Karesh

Locus bank: L05D1-001 – L05D1-129, W5680, W10078, W16127, W16150, W16373, W16634, W26100, W26127, F26163, F26198, W26204, W04D1-076, W04D1-094, W04D1-125, W04D1-127, W04D1-136, W04D1-165, W04D1-175, W04D1-185

Basket bank: 05D1-0001 – 05D1-0958

Image bank: d/p/v XXY-0001 – d/p/v XXY-0064.

Overview

Each of the three discrete excavation areas known collectively as “D1 East” was opened to clarify relations between previously excavated major features or areas. As such, each had its own goal in the 2005 season, making a strict phase-by-phase description of the units impossible. Instead the phases are presented by unit or, when possible, by unifying feature.

In squares AQ 13/14/15 (RAK) we aimed to clarify the stratigraphy below the Phase 1 “bath house” complex excavated in 2004. Although a significant amount of material was cleared from this area, what remains still appears to be disturbed. The two, massive, north-south robber trenches persisted for most of the season (western RT L04D1-042 = L05D1-038, L05D1-043, L05D1-044 (P05D1-9022, -9075); eastern RT L04D1-038 = L05D1-027, L05D1-067 (D05D1-1805, P05D1-9075-6) add balloon photo, if available). The northernmost section of the eastern trench came down on a patch of plaster floor F05D1-027 and in the south at the same elevation was another patch of plaster F05D1-076 (P05D1-0979). Their connection to the Phase 2 “big building” revealed last season is unclear.

At the end of the 2004 season, the narrow north-south area outside the “bath house” complex in AQ 14/15 (RAK) had several small Phase 2 rooms (wall foundations and floors) bisected by the east-west British trench (L04D1-128 = L05D1-039, L05D1-097). These were all cut on the east by the western wall of the bath house W26073, now almost entirely robbed out (RT L05D1-038); to the west was material excavated in the 2000 season. All of these Phase 2 features were removed. Below they revealed a series of surfaces and accumulations we called the “floor sandwich” (P05D1-9001-6) that contained only a fair amount of pottery; by the end of the season, the “sandwich” had reached clean Hellenistic/Phase 3.

Square AR-16 (LCC) was excavated to continue to clarify the area north and west of the “bath house”. Since the unit was so highly disturbed, a good part of the season

was spent cleaning and attempting to understand the superimposed and damaged floors in the center, north, and southern areas of the square. The most complete floors exposed at the end of the 2004 season, F04D1-170 and F04D1-177, are cut in the north by the Phase 1 wall foundation W04D1-076 (continued below as W05D1-108) (P04D1-4086, -4099, 4093; P05D1-9068); they are also cut by that wall's robber trenches (beginning with L05D1-014, L05D1-036) and by possible British Trenches to the west and south (L04D1-133 = L05D1-042 and L05D1-17, respectively). The situation is repeated with the floor below, F05D1-060 (P05D1-9044-45). North of W04D1-076 and south of possible British Trench L05D1-17 were isolated patches of floor that corresponded to the general sequence of floors in the center of the unit (F04D1-159, F05D1-013, F05D1-023, F05D1-064, F05D1-065). Finally, a series of plaster floors were discovered in the western baulk (from top to bottom: F05D1-125, F05D1-124, F05D1-074). These phantom floors are cut by the British Trench L04D1-133, but appear to approximately correspond to the preserved floors in the unit.

Helpful relations were meager: W05D1-034 (P05D1-9013, -9051) clearly extends into the baulk shared with AQ-16 and probably relates to the pavement in AQ-15. Possibly what remains in AR-16 is the outside wall of a Phase 2 "big building" and its courtyard. After the Phase 2 floors were removed, a different picture emerged. Although still highly disturbed, we appeared to be well away from the Phase 2 layout.

The excavation of squares AR-14/15 (RAK) aimed to uncover more of the eastern area of the "Persian Palace", although none was found. Five years of exposure and erosion made this task difficult, but cleaning revealed two fairly well-preserved small rooms built off the eastern side of north-south wall W16343 (both stages of the dividing east-west wall W26100 dovetail with it; p05A-0012). Only the northern room had floors (F26163 and F26198). In the southern room W5680 dovetails with W16373A. These walls form a corner directly on top of the main cross wall of the "Persian Palace", W10078. We can only conclude that the plan of the structure built over the "Persian Palace" in Phase 3 was unchanged in Phase 2 in this unit.

Finally, square AS-15 (MA) was opened from topsoil to expose the northernmost wall of the "Persian Palace", W16634 (previously excavated in AS-14 from 1995-2000; **W16634 is the number that appears on the 1998 separations, but it's also the number of the crappy wall east of it in AR 15 that's maybe Phase 1**). What we found instead was another complex series of walls that obfuscated the original goal but added some interesting features (including a Phase 2 kiln—perhaps for glass-making) to the plan of the Roman town (W05D1-081, W05D1-109, W05D1-110, F05D1-117; P05D1-9069-70). Just a few centimeters below topsoil was the latest feature in the unit, the Phase 1 north-south wall W16127 (removed from AS-14 in the 2000 season). The eastern face of top course of ashlar was beveled, leading us to speculate that this was the outside of the building. Cobble floor F05D1-001 reached this course (P05D1-9000, -9008) and presumably was an exterior courtyard leading into this building of unknown function (cobble floor F05D1-250 on the opposite side also reached this course; see the report from D1 west). Just below F05D1-001 was patchy kurkar floor F05D1-032 that also reached W16127; it is probably subfloor for the cobbles. Although too patchy to seal the loci below, the next floor F05D1-032 clearly was built above another north-south wall W16150, confirming that the wall is no later than Phase 2. W16150 is the same wall that covered the Hellenistic Nike (in

its Stage B) in square AS-14 in 2000. In future seasons it should be possible to establish a sequence of walls post-dating the “Persian Palace”.

Body

The main considerations for the stratigraphic scheme

The units excavated as Area D1 East have almost no direct relations with one another. Each has its own (often obscure) sequence of features that, whenever possible, was relegated to three main occupation phases: Phase 1 was assigned to the uppermost major features in each unit; it includes the “bath house” complex (AQ-13/14/15) and the beveled-entry building (AS-15 and westward). Phase 2, was assigned to with a corner made by a half-column drum wall that belonged to the, “big building” (AQ-14/15); one orphaned southern cross was also assigned to this phase. We had two reasons for doing so: first, part of these walls appear to have been destroyed in the construction of the “bath house” complex (some of them, like north-south wall W04D1-125 may have been reused in the “bath house”); and, second, we have proceeded to employ the convention that walls with half-column drums are in Area D typical of Phase 2. Also assigned to Phase 2 were stone pavements we associated with the big building based on their elevations (AQ-15, AR-16). The phasing within the “bath house” needs revision because so much material—some of it superimposed—has been assigned to Phase 2. It will probably be necessary to subdivide Phase 2 as done elsewhere in D1 east. This will require taking new elevations on some walls excavated as far back as the 2004 season to see what, if any, clarifications can be made. In an unrelated area, a kiln installation and a confused jumble of walls (AS-15) were clearly below the floors of the Phase 1 beveled-entry building. Finally to Phase 3 we assigned a building of indeterminate size containing at least two small rooms (AR-14/15) based on the stratigraphic scheme developed in the 2000 season and the Hellenistic pottery found in these rooms during the 2005 season. Some of the confusing walls in AS-15 were also assigned to this phase, but only because they seem to pre-date the kiln installation; direct and clear relations were almost nonexistent. Most of these units were highly disturbed by British trenches, robbing trenches or modern overbuilding and construction—in some cases by all three. No single unit preserves a good sequence from Phase 1 to 3; only squares AR-14/15 have well-preserved Phase 3. As stated above, most of these units have only (very) local phasing and do not relate directly to each other.

Phase Descriptions

Phase 1

Inside “bath house” (AQ 13/14/15): Pit L05D1-126; W05D1-090; western RTs for W26073: L04D1-042 = L05D1-038, L05D1-043, L05D1-044; eastern RTs for W04D1-125: L04D1-038 = L05D1-027, L05D1-067.

AR 14/15: W16634?, possible RT for W16634 L05D1-121.

AR-16: W04D1-076; RT’s for W04D1-076: L05D1-036, L05D1-047; W05D1-108.

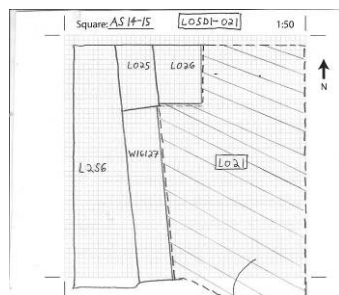
Beveled-entry building (AS-15): W16127A, F05D1-001, F05D1-032, F05D1-250 and RT L05D1-025 (cutting W16127A and F05D1-250).

In squares AQ-13/14/15, Phase 1 is the “bath house” complex. Although we chased the two massive north-south robbing trenches for most of the season (L05D1-038, L05D1-043, L05D1-044 (P05D1-9022, -9075); and L04D1-038 = L05D1-027, L05D1-067 (D05D1-1805, P05D1-9075-6)), few new data were gathered. Note that W04D1-125 in AQ-13 was deemed to not be the southern continuation of the wall in AQ-15 based on its different construction (only 2 courses of ashlar, with a bottom elevation of #15.03); the wall in AQ-13 was renamed W05D1-090 and may belong solely to Phase 1. South of this preserved area was a highly disturbed fill L05D1-011 that contained rubble of the bath house’s hypocaust floor (F04D1-088). Because this locus contains Phase 1 rubble, it helps to reconstruct the robbing action in AQ-14/15: sometime post-Phase 1 the entire southern end of AQ-15 was torn apart by stone-robbers; once the good ashlar from western “bath house” wall W26073 and the Phase 1-2 interior wall W04D1-125 were located, robbers followed them for their entirety producing two massive robbing trenches and disturbing most of the material between them on their way. Outside the “bath house” complex, all Phase 1 features were already removed in 2004.

In AR 14 is W16634, an east-west rubble wall originally excavated in 1995-2000. Its phasing is tentative, based on its orientation, shoddy construction and that it cut Phase 3 kurkar floor F26198 (as reported in the 2000 season; no trace of the latter was found in 2005). British Trench L05D1-097 cuts W16634. In the northern area of these units, particularly near British Trench L05D1-097 and W16634, we should proceed with caution next year. Despite repeated attempts to draw the loci clearly in this area, several baskets were contaminated (see record for L05D1-121).

This season in AR-16, there is also only one Phase 1 feature, a small stump of a wall foundation, W04D1-076 (P04D1-4086, -4093, -4099). It was removed mid-season and was found to sit on top of even more stone foundation, W05D1-108 (P05D1-9068). W04D1-076 cuts Phase 2 floors F04D1-170, F04D1-177 and F05D1-013. Two floors removed last season, F04D1-056 and F04D1-079, were not phased previously. F04D1-056 should probably be assigned to Phase 1 because it floats over/covers Phase 2 floors F04D1-170 and F04D1-177 and its elevation (#15.93-15.87) is nearly identical to the adjacent, but for now unrelated, Phase 1 F05D1-001 and F05D1-250 in AS-15 (#15.99-15.87; 15.97-15.81). The phase of F04D1-079, which also covers Phase 2 floors, is still unclear; its elevations (#15.76-15.52) are closer to AS-15’s Phase 2 floor, F05D1-063 (#15.63-15.52; see below).

All Phase 1 features in AS-15 relate to the monumental beveled-entry building:



the beveled wall W16127A (P05D1-9000, -9008) and the three floors that reach it: exterior cobble floor F05D1-001 (#15.99-15.91; P05D1-9000, -9008) and its subfloor F05D1-032 (#15.91-15.87; P05D1-9054-5) and interior cobble floor F05D1-250 (see D1 West).

Key Loci:

There are no key loci for this phase.

Phase 2

Inside “big building” (AQ 13/14/15): unexcavated tabun? L05D1-072, F05D1-027, F05D1-076, W04D1-125, W04D1-175, pavement F04D1-149.

The “floor sandwich” outside the “bath house” (AQ 13/14/15): F05D1-004, F05D1-007, F05D1-008, F05D1-020, F05D1-031, F05D1-051.

AR 14/15: W26100A (cut by? possible RT L05D1-095), W16373A, F26163.

AR 16: F05D1-013, F05D1-023, F04D1-170, F04D1-177, F05D1-060, F05D1-064, F05D1-065, Phantom F05D1-074, Phantom F05D1-124, Phantom F05D1-125, Pavement L04D1-186, W05D1-034.

Kiln installation and related? features (AS 15): **Phase 2a** F05D1-063, W16127B, W05D1-129, and **Phase 2b** F05D1-117, W16150A (cut by RT L05D1-062), W05D1-093, W05D1-081 (cut by RTs L05D1-080, L05D1-083), W05D1-109, W05D1-110, W26127.

In AQ-13/14/15 a few new Phase 2 features were found.



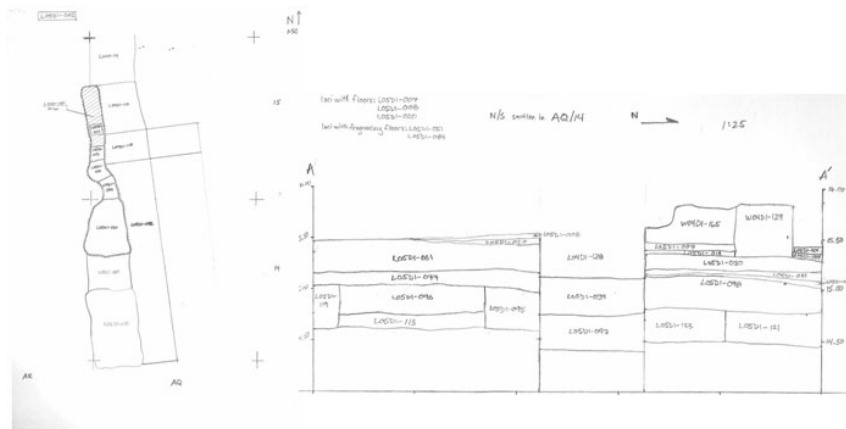
Between the two main robber trenches was a small area with the only undisturbed loci including L05D1-010 and (below it) W05D1-028, L05D1-052 and L05D1-057. This is the same area that contained the isolated sequence of Phase 0-2 floors in the 2004 season (F04D1-014, F04D1-086, F04D1-098). At the end of the season, it revealed a

portion of a well-preserved, thick plaster floor F05D1-076 (#14.63-14.55; P05D1-9075, -9085). The floor is cut by Phase 1 possible pit L05D1-126 and nearly reaches Phase 2 W04D1-175 (that dovetails with W04D1-125). Eastern robbing trench L05D1-027 came down on a substantial plaster floor, F05D1-027 (#14.87-14.68), on which the Phase 1-2 W04D1-125 sits (P05D1-0979, D05D1-1805). F05D1-027 was assigned tentatively to this phase because its elevations are similar to those F05D1-076.

As mentioned above, W04D1-175 is constructed out of half-column drums and cut-down capitals of the same dimensions as those recovered during previous seasons and tentatively attributed to a Hellenistic temple, propylon, or portico (Stewart and Martin 2003; P04D1-4105-7; P05D1-0979 (for W04D1-175)). It is mirrored by a wall with identical construction in AQ-14. Evidence for this southern cross-wall was found in the highly disturbed fill of L05D1-011; it is entirely robbed out now save a single column drum, B05D1-0279.

On the north, W04D1-175 is reached by pavement L04D1-149. Thanks to the looting and subsequent collapse of a significant portion of the baulk between AQ-15 and AQ-16, it is now possible to see that the pavement extends well to the north. We can also conjecture that the Phase 2 wall in AR-16's eastern baulk (W05D1-034, see below) relates to the Phase 2 material in northern AQ-15.

The most important feature in this area is the “floor sandwich”, most of which was sealed by Phase 2 walls and floors (see report from 2004). These walls and floors were all removed, from North to South: W04D1-094, W04D1-136, F04D1-147, W04D1-127, W04D1-165, F04D1-129, F04D1-164, W04D1-185. All features and the “sandwich” were cut by a British Trench (L04D1-128 = L05D1-039 = L05D1-097):

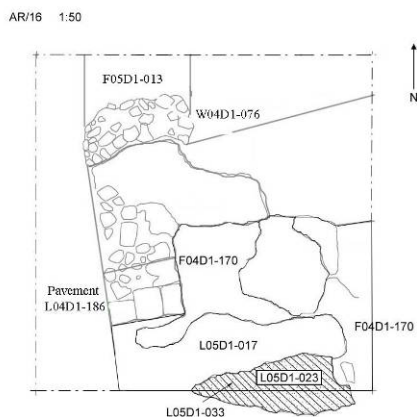


The formation of the “sandwich” is not altogether clear. In areas we found what we thought were certain floors, but the section showed that some of these may have been accumulations (see the micromorphology report). Both the northern and southern portions of the upper “sandwich” have good loci with the latest pottery dating to the early Roman (with Type 12 lamps, “Megarian” bowls and Eastern Terra Sigillata) before moving into loci with early/mid Hellenistic and Persian pottery. Although many of the loci within the sandwich are technically unsealed, they are still good contexts with the exception of the latest, southernmost portion, L05D1-119, that appears to be disturbed. Based solely on the pottery reading, the Phase 2 floors within

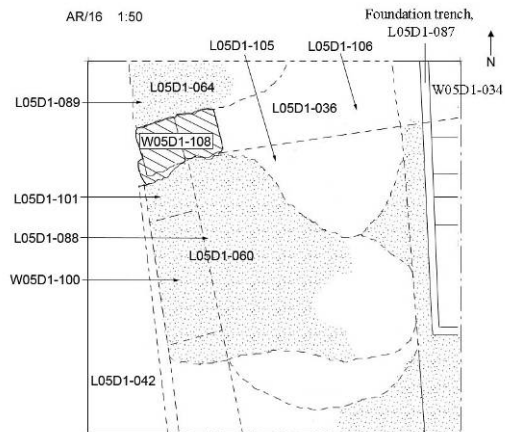
the sandwich are F05D1-004 (P05D1-9002-3), F05D1-007 (P05D1-9001, -9007), F05D1-008 (P05D1-9001, -9006; which contained a Dor Type 26 lamp), F05D1-020 (P05D1-9017, -9019) and F05D1-051 (P05D1-9030; also with a Type 26 lamp). One floor falls early in Phase 2: F05D1-031 (P05D1-9028-9). The lowermost floors in this sequence, F05D1-051 in the north and F05D1-031 in the south, cover (but don't seal) loci with Hellenistic pottery, including F05D1-084 (see Phase 3). The sequence of the "sandwich" has always seemed independent of the features inside the "bath house". The "sandwich" area also has a very long Phase 2 and should probably be subdivided with Phase 2A for the series of buildings and floors and Phase 2B for the "sandwich" itself.

In Phase 2, AR-14/15 contains a portion of a building with two rooms (see sketch for Phase 3). The main north-south wall W16373A dovetails with cross-wall W26100A. In the northern room was F26163, which could not be re-traced because of erosion. It could belong to this phase because it may have once reached these walls and because it covered F26198 (see Phase 3).

Nearly all the features excavated in AR-16 belong to Phase 2:



To the north, Phase 1 W04D1-076 cut F05D1-013 (P04D1-4086, -4093, -4099; D05D1-1400). To the south, W04D1-076 cut superimposed floors F04D1-170 and F04D1-177 (P04D1-4098-9; P04D1-4096). British trench L05D1-017 severed the relationship with floors to the south, but, based on similarity of elevations and construction methods, F05D1-023 is contemporary with F04D1-177; below, F05D1-033 is contemporary with F04D1-170. F04D1-170 nearly reached stone pavement L04D1-186. Below the floor makeup of F04D1-170 (L04D1-040) was another fragmentary preserved floor, whose main number is F05D1-060:



There is some debate whether F05D1-060 covered the foundation trench for eastern W05D1-034 (Allen), or whether the foundation trench cut the floor (LCC; P05D1-9013, -9051; P05D1-9044-5). The surface elevation of F05D1-060 and the top of foundation trench L05D1-087 are about the same, and the question is whether the very patchy floor was accidentally “cleaned away” above the foundation trench. For now, the locus cards reflect the opinion of the square supervisor (although she does describe both possible scenarios). The pottery readings from the “affected areas” show that the fill down to F05D1-060 (L05D1-040 = floor makeup of F04D1-170) was Roman-Hellenistic; the fill below the F05D1-060 (unsealed) was Hellenistic-Roman; and the foundation trench contained only Hellenistic and Persian pottery. In short, despite what was observed in the field, F05D1-060 is not earlier than W05D1-034. F04D1-170, F04D1-177 and F05D1-060 all could have reached W05D1-034. Floors F05D1-064 (cut by Phase 1 W05D1-108) and F05D1-065 (cut by British trench L05D1-017) are probably contemporary with F05D1-060 based on construction and elevations. For the same reason, the three phantom floors in the western baulk should also be in Phase 2: F05D1-125 ≡ F04D1-177; F05D1-124 ≡ F04D1-170; F05D1-074 ≡ F05D1-060 (P05D1-9049-50).

The sequence for the Phase 2 floors in this unit is:

F04D1-177 ≡ F05D1-023 ≡ F05D1-125 ≡? F05D1-013

v v v

F04D1-170 ≡ F05D1-033 ≡ F05D1-124 ≡? F05D1-013

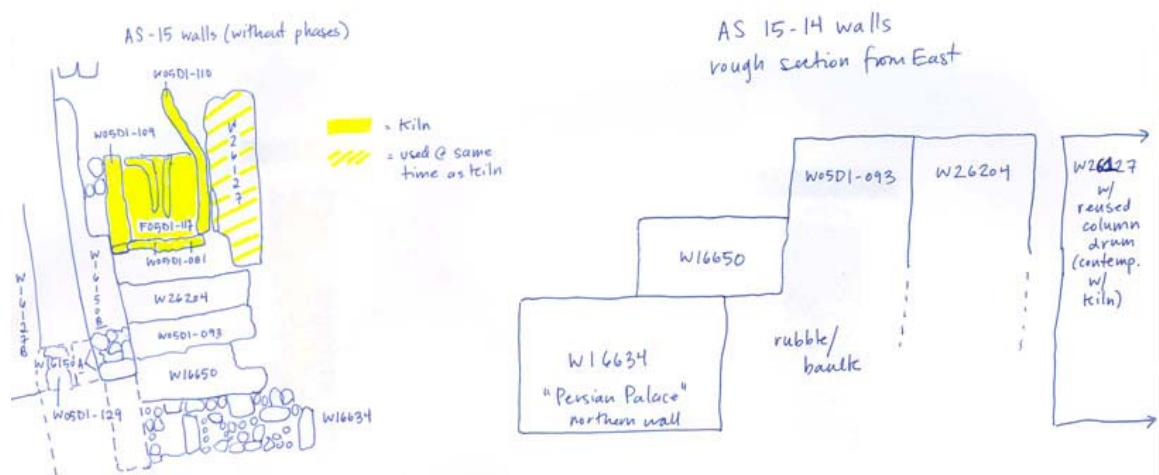
v v v v

F05D1-060 ≡ F05D1-065 ≡ F05D1-074 ≡ F05D1-064

Despite a great effort, this unit did not live up to its purpose: it never clarified what was happening outside the Phase 1 bath house complex and, perhaps because we have not yet excavated enough of AQ-15 or any of AQ-16, it doesn't have much good Phase 2 material. It did, however, turn up a fair amount of finds including what at the time seemed like a large amount of Roman zoomorphic vessels (05D1-0108, -0153, -

0587). It's worth remembering that in 2004, the unit produced a good amount of well-preserved Roman pottery, particularly lidded juglets.

In AS-15, Phase 2a lacks a coherent plan. Directly below the beveled building W16127A is W16127B (P05D1-9000, -9008). A small segment of east-west W05D1-129 dovetails with W16127B and abuts "Nike Wall" W16150A (as per Allen; Ilan disagrees). F05D1-063 is Phase 2a by default: it is below the lowest Phase 1 floor (F05D1-032) and seals kiln wall W05D1-081. Behind the back wall of the kiln lies a complex set of east-west walls, all of which overlie the Persian Palace wall:

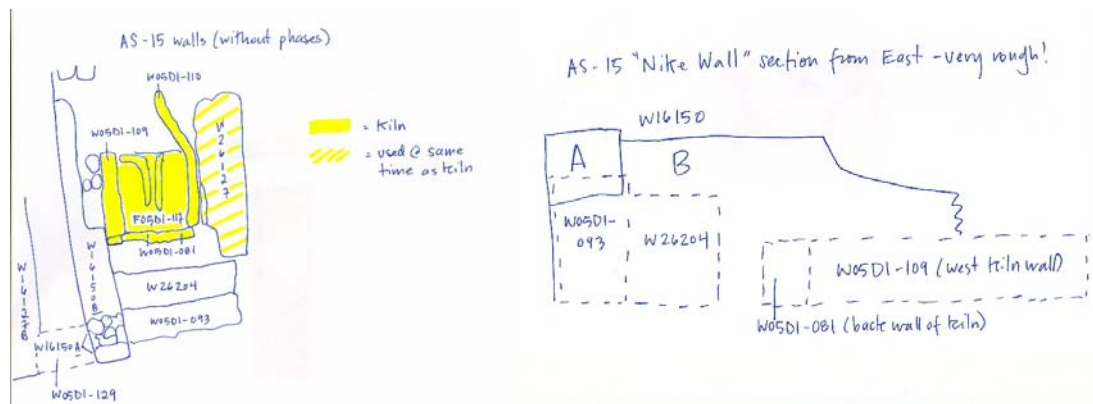


The uppermost of these walls were exposed in AS-15 this season: W26204 and W05D1-093 (P05D1-9069-70; P05D1-9058-59). The eastern end of W26204 had been exposed in the western baulk of AR-15 in 2000. With further excavation this season, it became clear that this was not one wall but two built against each other. The southernmost wall was given the number W05D1-093. Both walls abut the "Nike Wall": W26204 abuts Stage B and W05D1-093 abuts both Stage A and B. This may mean that two, contemporary buildings were side-by-side here or that W26204 is from an earlier phase.

So, in 2a:

F05D1-063 ≡ W16127B ≡ W05D1-129

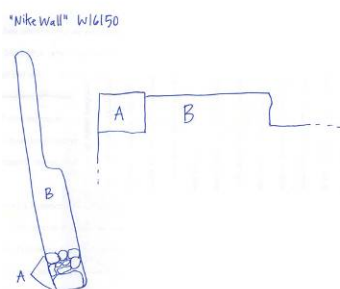
Phase 2b contains the kiln:



Side walls W05D1-109 and W05D1-110 abut back wall W05D1-081; as preserved, the firebox floor F05D1-117 reaches only the two side walls -109 and -110. Eastern kiln W05D1-110 is built against W26127. W26127 is 2b based on its construction technique (at least one reused column drum) and signs of burning that show it was contemporary with the kiln. Then 2b is:

F05D1-117 \equiv W05D1-081 \equiv W05D1-109 \equiv W05D1-110 \equiv W26127

The phase of the “Nike Wall” W16150A-B is murky in this unit and, as the above illustrations show, it can’t be stated with any confidence right now. The two stages of the wall are barely observable right now. At its southern end, a small section shows rebuilding:



So, here is what we observed this season vis-à-vis the “Nike Wall”: W05D1-093 abuts both stages; W26204, W05D1-081 and W05D1-129 abut stage B; and western kiln wall W05D1-109 may cut stage B—which depends on the limits of the kiln wall: a pile of stones in robber trench L05D1-083 may or may not be part of the wall (see P05D1-9069-70); if the stones are from W05D1-109, the kiln probably cuts the “Nike Wall” (Allen).

The “sequence” for the “Nike Wall” is:

W05D1-129 ≡? W05D1-093 ≥ W16150A _? W26204 ≡? W05D1-081 ≡ W05D1-109

v

W16150B

So all that can be said now is that the “Nike Wall” W16150B appears to have been built in Phase 3. Stage A of the “Nike wall” W16150A and W05D1-093 could belong to either 2a or 2b. If the kiln does cut the earlier stage of the “Nike Wall” in Phase 2b, it would make sense that the later stage of the “Nike Wall” is a Phase 2a rebuilding of it, possibly when the kiln went out of use. The bottom line is that only by removing some of these walls may we begin to understand the phasing of many of them.

Key Loci:

AQ-14/15: floor sandwich loci: L05D1-004, -007, -008, -020, -031, -051.

AR-16: for the main floor sequence: L05D1-040 and -060; for the southern baulk floor sequence: L05D1-023, -033, -065.

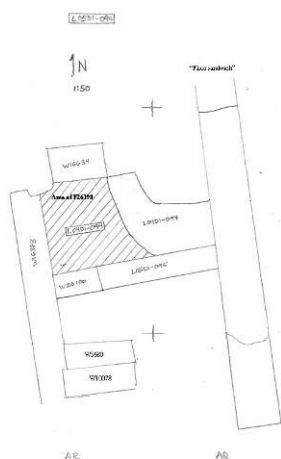
AS-15: sealed loci: L05D1-069 (floor makeup for 2a F05D1-063) and L05D1-075 (fill below sealed floor makeup); kiln fills: L05D1-099, -111, -112, -114, -115, -117, -118.

Phase 3

AQ 14/15: F05D1-084; AR 14/15: W16373B, W5680, F26198, W26100B; AR-16: mud brick W?05D1-100; AS-15: W16150B (cut by RT L05D1-083), W26204

F05D1-084 is the bottommost floor in the AQ-14/15 sandwich, lying directly below F05D1-051. It does not contain any Roman pottery, so has been assigned to Phase 3. F05D1-051 is the only Phase 3 floor in the sequence. There is no Phase 3 material in the eastern portion of this area.

The Phase 3 building with two rooms in AR-14/15 is directly below the Phase 2 one:



The main north-south wall W16373B dovetails with cross-wall W26100B (P05D1-9077). Locus cards from the 2000 season state that in the northern room F26198 reached W26100B and W16373B (no photographs currently available). In the southern room, W16373B dovetails with W5680 (P05D1-077).

In AR-16 doubtful mudbrick wall W05D1-100 (P05D1-9068) is Phase 3 because it is below the lowest Phase 2 floor, F05D1-060. Once W05D1-100 was pedestalled it no longer looked like much.

AS-15 has no clear Phase 3, although it is possible that the earliest stage of the “Nike Wall”, W16150B, belongs here (see sequence and sketch given in Phase 2). It is also possible that W26204 belongs to this phase because it abuts W16150B and is built directly against W05D1-093.

Key Loci:

AQ-14/15: floor sandwich: fill down to Phase 3 floor, L05D1-084.

Phase 4

W10078 (AR 14/15)

Phase 3 walls W5680 and W16373B dovetail directly on top of “Persain Palace” W10078 (P05D1-9077). No northern continuation of W26249 (“Big Auntie Wall”, which dovetails with “Big Mother Wall” W26000) was found. If it is preserved in this area, it will be easy to reach it next season.

Key Loci:

AR-14/15: unsealed but good Hellenistic fill below the approximate boundaries of the 2000 season’s Phase 3 floor (F26198) in the northern room of the building: L05D1-094; unsealed but good Hellenistic context in the southern room: L05D1-096, -113, -116.

Appendix I: Top-plans

Search the graphics database for all of the season’s top plans and output them onto an MS-Word file. Insert this file here.

Place the cursor inside the table showing the image file names and activate the ‘SearchForPics’ macro (Tools>macros>SearchForPics>Run). If the images are not in the currently-selected folder the macro will ask you to browse your directory structure for the folder in which the images are located. The macro will then proceed to insert the actual pictures above each caption.

Appendix II: Basket list

Appendix III: Locus cards

Appendix IV: Genealogies

Appendix V: Photos

See “top plans” above for the procedure of entering the actual images into the report.

Image Number	FileName	created	Description	Image	Area	Season
dionysos and ariadne	p04D1-2036	24/7/04	from S *other loci/features: F04D1-086, W04D1-096, L04D1-097	Area Photo	D1	2004
DOR057	p04D1-2037	24/7/04	view from W *other loci/features: W04D1-096, L04D1-097	Area Photo	D1	2004
DOR058	p04D1-2038	24/7/04	view from S	Area Photo	D1	2004
DOR059	p04D1-2039	24/7/04	view from E	Area Photo	D1	2004